

High pressure regulator HD550



Fittings and gauges optional

Description:

The high pressure-regulator HD550 is a single-stage pressure-regulator made of high-grade steel 14404 or brass.

The HD550 is designed as a piston pressure-regulator and reduces the pressure of compressed gases or liquids to a maximum outlet pressure of 550bar.

It works according to the principle of the force equilibrium between the adjusted spring action and the outlet pressure.

Design:

With the version with seat diameter 6,35mm by a balanced poppet a large independence from form fluctuations is reached.

The piston diameters are different, thereby ensuring good controllability at low outlet pressures.

The piston diameters are different, thereby ensuring good controllability at low outlet pressures.

The pressure-regulator is capture vented and the control spindle is fitted with an axial-thrust bearing to facilitate, even at high working pressure, adjustment with little effort.

In and outlet is fitted with NPT 3/8" internal thread as standard.

The regulator can be equipped optionally with an inlet and an outlet gauge.

Technical details:

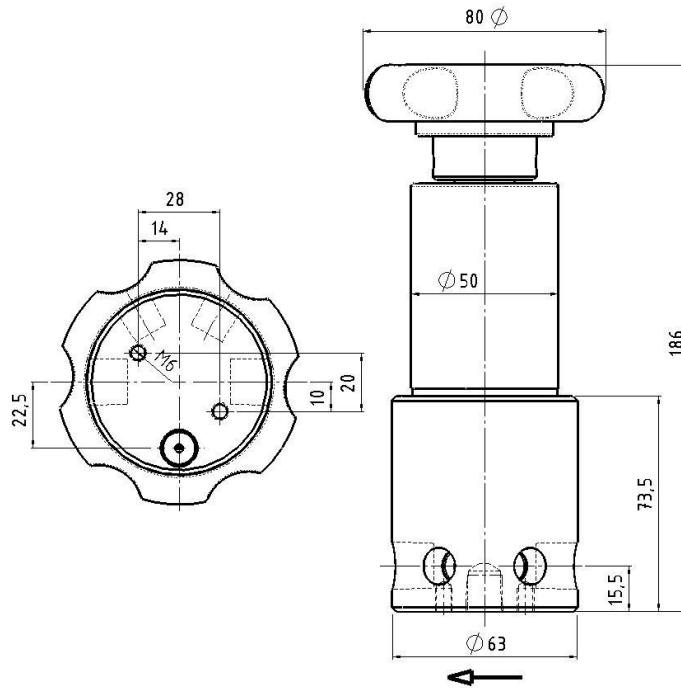
Material:	brass or st. steel
Seat:	Ø 1,70 Ø 6,35 (balanced)
Kv-value:	0,03 (Ø 1,70)
Kv-value:	0,7 (Ø 6,35)
Seat:	PCTFE
Elastomere:	EPDM / viton
Max. Inlet pressure:	750 bar
Regulating area:	0,5 - 100 bar 10 - 550 bar
Operating temp.:	-20°C to +60°C
Size:	Ø80 x 186
Weight:	2,5kg
Connections:	in/outlet NPT 3/8 f gauges NPT 1/4

Horning Quality standard

The company Horning is certified to **DIN EN ISO 9001 and ISO 14001:2009.**

All single parts are manufactured, assembled and tested in house.

The finished parts are therefore under the criteria of our exact quality control with 100% final control.



Application area:

This pressure-regulator is especially for high in and outlet pressures
With its captured vent this pressure-regulator is particularly suitable for use as a pilot pressure-regulator, e.g. in control systems in connection with dome pressure-regulators.

The stainless steel version with elastomere made of viton permits the use of aggressive media with this pressure-regulator. However, with the captured vent version, provision must be made for venting away at the base of the regulator.

We urgently recommend the connection of a fine filter, with at least 40 μ , before the pressure-regulator, as well as to protect following components with suitable relief valves against unduly high pressures.

Accessories:

7. Gauges, tube fittings und accessories, flanges,
8. fine filter F1 (see data sheet),
safety valves available on request

Order details:

Material:

- 1 = brass
- 2 = st. steel

Seat:

- 1 = \varnothing 1,70
- 2 = \varnothing 6,35 (balanced)

Elastomere:

- 1 = EPDM
- 2 = viton

Outlet pressure:

- 1 = 20 bar
- 2 = 70 bar

Capture venting:

- 1 = none
- 2 = with capture venting

Gauges:

- 1 = none
- 2 = with inlet and outlet gauge

Order example:

Regulator type	
46	HD550

46	-	1	1	1	1	2	Medium
Type	Mat.	Seat	Elast.	Pres.	Vent	Gauge	Medium