

# Line pressure regulator HD400



## Description:

The Line pressure regulator HD400 is a single-stage pressure-regulator made of stainless steel 1.4404 or brass nickel and mat chrome plated. It is designed as a piston pressure regulator specifically for a high pressure range. The HD400 reduces the pressure of compressed gases or liquids to a maximum outlet pressure of 400 bar.

It works according to the principle of the force of equilibrium between the adjusted spring action and the outlet pressure.

## Design:

This pressure regulator is designed for use with high inlet and outlet pressures and gases with a degree of purity of up to 5.0.

The inlet and outlet of the regulator is equipped as standard with NPT 1/4" internal threads.

The regulator can be equipped optionally with an inlet and an outlet gauge.

## Technical details:

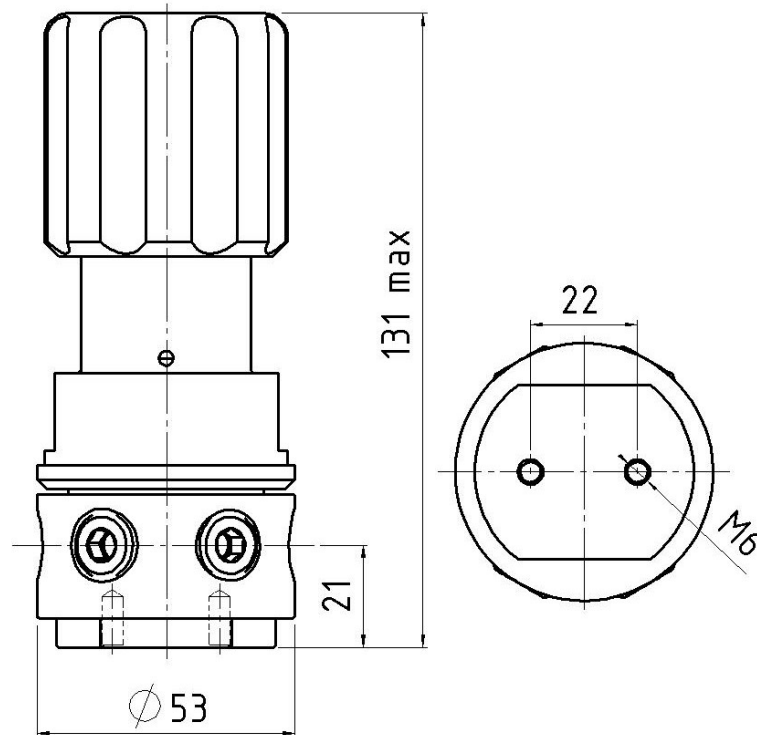
Material:	brass nickel plated or stainless steel
Seat:	PCTFE
Elastomere:	viton / perbunan
Max. inlet pressure:	440 bar
Regulating area:	10 – 400 bar
Operating temp.:	-20°C to +70°C
Size (WxHxD):	131 x Ø53
Weight:	865g
Connections:	NPT 1/4" f

## Hornung Quality standard

The company Hornung is certified to **DIN EN ISO 9001 and ISO 14001:2009.**

All single parts are manufactured, assembled and tested in house.

The finished parts are therefore under the criteria of our exact quality control with 100% final control.



#### Application area:

This pressure regulator is used especially for the withdrawal of a less amount of gas at high inlet and outlet pressures. Due to its small size is this pressure regulator particularly suitable for use as a pilot pressure regulator e.g. in controlled systems in connection with dome pressure regulators. The stainless steel construction with elastomere made of viton compound permits the use of aggressive media with this pressure regulator. We urgently recommend the pre-connection of a Fine filter, with at least a level of purity of up to 40 $\mu$ , as well as the subsequent integration of suitable safety valves against unduly high pressure.

#### Order details:

##### Material:

- 1 = brass
- 2 = st. steel

##### Elastomere:

- 1 = NBR
- 2 = viton

##### Gauge:

- 1 = without gauges
- 2 = outlet gauge
- 3 = in and outlet gauges

##### Outlet option:

- 00 = NPT 1/4" f
- 03 = compression fitting 3 mm
- 06 = compression fitting 6 mm
- 08 = compression fitting 8 mm
- 10 = compression fitting 10 mm
- 12 = compression fitting 12 mm

#### Order example:

Regulator type	
45	HD400

45	- 1	1	3	06	Medium
Type	Mat.	Elast.	Gauge	Option	Medium

#### Accessories:

- 7. Gauges, tube fittings und accessories,
- 8. Fine filter F1, safety valves available on request