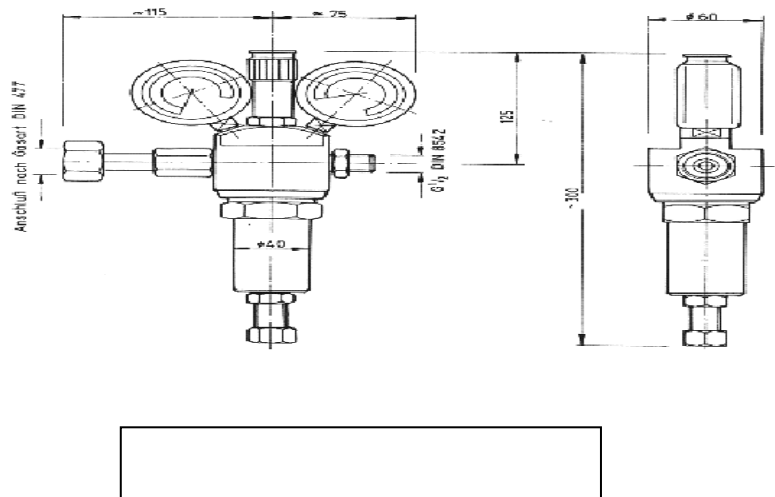
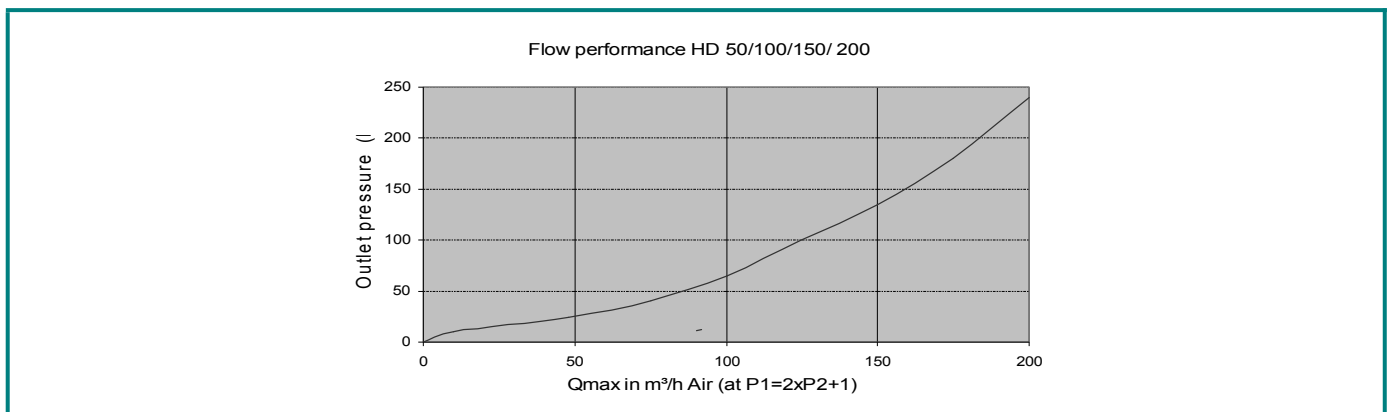


Cylinder pressure regulator HD 50/100/150/200



Model	Gas	Inl.Press. P1	Outl.Pressure P2	Flow Q1	Inlet-Connection	Outlet-Connection
HD 50/100/150/200	NF, F, NC	max. 300 bar	max.200 bar	200 m ³ /h Luft	Cylinder DIN 477/CEN	Screw Ø16



Cylinder pressure regulators carry out intermediate reduction of relatively high pressure in reservoirs or storage containers.

The needed amount of gas and pressure at the point of withdrawal determines the intermediate pressure. These cylinder pressure regulators are capable of reducing a maximum inlet pressure of 300 bar to a constant operating pressure area of 50 bar.

The HD 200 in turn, reduces a maximum inlet pressure of 300 bar to a maximum operating pressure of 200 bar and is in the brass and stainless steel versions obtainable.